



TERMINAL SUPPLY CO.

WE'VE GOT IT. WE'LL build it. WE'LL solve it.

Prices valid through May 31, 2024

SPRING Specials

LOOM CLIP INSTALLATION KIT



This kit contains a collection of popular tees and unions for installing harnesses dressed with convoluted tubing. This kit also contains fir-tree mounted clips for quick and easy installation. OEM quality parts ensure long lasting wear against corrosion and vibration.

Kit includes:

- 4/ea. Loom Tees in size 3/8"
- 10/ea. Outlet Rings in size 3/8" & 1/2"
- 10/ea. Unions in sizes 3/8", 1/2", 5/8"
- 10/ea. Mountable Clips in sizes 1/4", 3/8", 1/2", 5/8", 3/4" and 1" (All snap into a 1/4" diameter hole)

Part Number	Total Pieces	Metal Dispenser	Price (each)
LOOM-CLIP-KIT-SP	94	LMB-12	\$79.00

CABLE TIE INSTALLATION KIT

T-50RTM

Black Fir Tree Cable Tie
Tread: 39.1" x 0.18" W
50 lbs. 2" max. dia.



28-1024

Gray Fir Tree Cable Ties
w/ Disc Offset
50lbs 12.5 mm Offset, 8.5"L



28-1025A

Black Pipe Mount Cable Tie
360 Degree Rotatable 50lbs. -
6.1" length



156-00539

2 Piece Black Cable Tie for Hole (round),
inside serrated, Ø1.6-38.0mm



TRM-35-BLK

Black Screw Mount Cable Ties
6.5" L x 0.18" W
50 lbs. 1-3/4" max. dia.



157-00296

Black Cable Tie for Hole (round),
outside serrated, Ø1.0-35.0mm



This 275-piece kit contains an assortment of mounting cable ties for loom and cable installation.

The two-piece fixings are supplied ready assembled and offer a simple and versatile method of bundling and fixing cables. The fir-tree base will easily push into pre-punched holes in panels or threaded, blind, holes and offers a very secure fixing.

Kit includes:

- 50/ea. - Black Fir Tree Cable Tie (T-50RTM)
- 50/ea. - Gray Fir Tree Cable Tie (28-1024)
- 50/ea. - Black Pipe Mount Cable Tie (28-1025A)
- 25/ea. - 2-Piece Black Cable Tie for Hole (156-00539)
- 50/ea. - Black Screw Mount Cable Ties (TRM-35-BLK)
- 50/ea. - Black Cable Tie for Hole (157-00296)

Part Number	Total Pieces	Metal Dispenser	Price (each)
CATFT-KIT	275	LMB-6	\$119.00

Questions? Call, email or visit our website:



800.989.9632



sales@go2TSC.com



www.Go2TSC.com

Visit us on social media:





Want to see more? Ask for our 500+ page catalog.

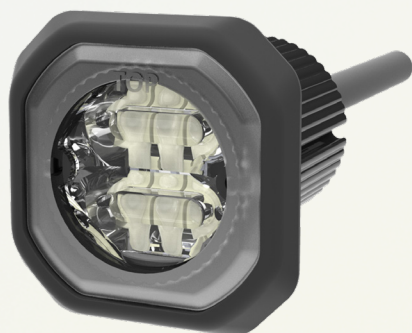


TYPE 130VT VORTEX DRILL BIT SET

- VORTEX-POINT™ tip design cuts 45% faster & excels at sheet metal & hardened metals like broken fasteners.
- Recommended for cast iron, brass, sheet metal, acrylic, mild steel, copper & hard steel.



Part Number	Total Pieces	Sizes	Price (each)
SD-8VT-SPEC	8	9/16", 5/8", 11/16", 3/4", 13/16", 7/8", 15/16", & 1" (all have 1/2" shank)	\$399.00



ECCO HIDE-A-LED™ SYSTEM

- Features: 10" cable, high-intensity LED's
- 29 selectable flash patterns (single color) or 69 selectable flash patterns (dual color) synchronizable, dimmable
- Mounts in 1" dia. hole
- In-line waterproof driver module eliminates the need for a remote power supply

Part Number	Color	Mount	Rated	Price (each)
EC-ED9040AW	Amber/White	Bracket	12-24V; 0.6A	\$79.00



CUT-OFF WHEELS & DISPENSER

- Fast cutting abrasive reinforced cut-off wheels can be used in a variety of applications, including steel cutting
- Reinforced with fiberglass to provide greater tensile strength as well as increased safety
- 3" dia. x 1/16" thickness with a 3/8" arbor
- 3" cut-off wheel dispenser mounts using two #10 self tapping screw

Part Number	Total Pieces	Metal Dispenser	Price (each)
COWD-3-KIT-SP	25	COWD-3	\$59.00



STARTER TOOL KIT FOR APTIV AND OPEN-BARREL TERMINALS

This tool package is perfect for the technician looking to expand his toolbox to take on a variety of open barrel terminal applications.

Kit includes:

- 1/ea. - OBTS-1028S crimps 24-14ga. wire
- 1/ea. - 12094429 green extraction, removal & insertion tool
- 1/ea. - 12094430 blue extraction, removal & insertion tool
- 1/ea. - 12014012 yellow socket / pin removal tool

Part Number	Total Pcs.	Description	Price (each)
APS-KIT-SP	4	Works with Weather Pack, Metri Pack 150 & 280 series, GT 150 & 250 series and many other connector lines	\$79.00