



# TERMINAL SUPPLY CO.

WE'VE GOT IT. WE'LL BUILD IT. WE'LL SOLVE IT.

## JANUARY 2025

### HEAVY DUTY SWITCH KIT- 13 pcs.

**KIT OF THE MONTH**



PART NUMBER	TOTAL PIECES	METAL BOX	PRICE
HDSWT-KIT-SP	13	LMB-12	<del>\$259.<sup>65</sup></del>

#### KIT DESCRIPTION

- Kit includes a selection of switches offering a wide collection of amps and actions to cover almost every application
- All switches include a 15/32" mounting stem
- These switches are used where panels are subject to splashes, hose downs or outdoor environments

**\$199.00**  
Special Pricing For  
a Limited Time Only

Prices valid January 1 through January 31, 2025

Questions? Call, fax or visit our website:

800.989.9632 800.989.0824 Go2TSC.com

Visit us on social media:



# KIT OF THE MONTH

Want more? Ask for our 500+ page catalog.

## HEAVY DUTY SWITCH KIT INCLUDES:

BACK

(ON) or (OFF) in the function indicates momentary

**1NT11-1**  
SPDT ON-OFF-ON 3-Screw  
UL Rating Code L191  
Environmentally Sealed Micro Toggle Switch



Qty. 1

**1NT11-2**  
SPDT OFF-ON 2-Screw  
UL Rating Code L191  
Environmentally Sealed Micro Toggle Switch



Qty. 1

**1NT11-3**  
SPDT ON-ON 3-Screw  
UL Rating Code L192  
Environmentally Sealed Micro Toggle Switch



Qty. 1

**1NT11-7**  
SPDT (ON)-OFF-(ON) 3-Screw  
UL Rating Code L192  
Environmentally Sealed Micro Toggle Switches



Qty. 1

**2NT11-7**  
DPDT (ON)-OFF-(ON) 6-Screw  
UL Rating Code L192  
Environmentally Sealed Micro Toggle Switches



Qty. 1

**1820**  
SPST OFF-ON 2-Screw  
Die Cast  
75A @ 6VDC  
Heavy Duty Push-Pull Switch



Qty. 1

**CH-5520**  
SPST ON-OFF 2-Screw  
Standard Handle, O-ring in Stem  
25A @ 12VDC  
Heavy Duty Toggle Switches



Qty. 1

**2150**  
SPST OFF-ON 2-Screw  
Standard Flat Handle  
50A @ 6-24VDC  
Heavy Duty Toggle Switches



Qty. 1

**CH-5582-10**  
SPST ON-OFF 2-8" Leads  
Standard Handle  
25A @ 12VDC  
Heavy Duty Toggle Switch



Qty. 1

**CH-55020-04**  
SPST (ON)-OFF 2-Wire leads  
Standard handle  
25A @ 12VDC  
Heavy Duty Toggle Switch



Qty. 1

**CH-55021-07**  
SPDT (ON)-OFF-(ON) 3-8" Leads  
PVC Coated, Standard Handle, O-Ring in Stem  
25A @ 12VDC  
Heavy Duty Toggle Switch



Qty. 1

**CH-81264**  
15/32"-32  
Gray Weatherproof Silicone  
Toggle Boot Seals

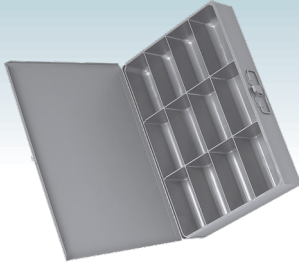


**CH-81264-05**  
15/32"-32  
Red Weatherproof Silicone  
Toggle Boot Seals



Qty. 1/ea.

Supplied in a large metal drawer  
18"W X 12"L X 3"H



Consider the following products to go along with the Heavy Duty Switch Kit:

ON-OFF Face Plate  
CH-8250



Toggle Protection Covers  
TS-CV-R & TS-CV-L



FRONT

Call, Fax or visit our website:



800.989.9632



800.989.0824



Go2TSC.com

Visit us on social media:

